



VOLKSWAGEN

AKTIENGESELLSCHAFT

Aria Etemad
Volkswagen Group Research

Bordeaux
6 October 2015



AdaptiVe

*Automated Driving Applications and
Technologies for Intelligent Vehicles*

*A Stepwise Introduction of
Automated Driving*



// Facts

Budget:	EUR 25 Million
European Commission:	EUR 14,3 Million
Duration:	42 months (January 2014 - June 2017)
Coordinator:	Aria Etemad, Volkswagen Group Research
8 Countries:	France, Germany, Greece, Italy, Spain, Sweden, The Netherlands, United Kingdom



// 29 partners

VOLKSWAGEN
AKTIENGESELLSCHAFT

BMW GROUP



BMW Group
Research and Technology



DAIMLER



VOLVO

PSA PEUGEOT CITROËN



Wir leben Autos.



RENAULT

 **BOSCH**
Invented for life

Continental

DELPHI

bast



Deutsches Zentrum
für Luft- und Raumfahrt
German Aerospace Center

CHALMERS



TNO

ika INSTITUT FÜR KRAFTFAHRZEUGE
RWTH AACHEN
UNIVERSITY



UNIVERSITY
OF TRENTO - Italy

UNIVERSITY OF LEEDS



wiww

Julius-Maximilian
UNIVERSITÄT
WÜRZBURG

alcor
consulenza innovazione

eict

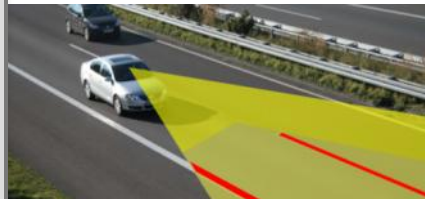
// Examples of driver assistance systems

Longitudinal control



City Break Assist
ACC & Front Assist

Lateral control



Side Assist
Lane Assist

Park assist systems



Park Assist Park Pilot
Rear Assist

Light



Light Assist

Recommendation



Pause
Recommendation

Driver information

Road sign



Sign Assist

// Examples for automated driving - industrial projects

Bertha Benz drive



© Daimler

2013 Mercedes

Traffic jam pilot



© Audi

2012 Audi

Motorway pilot



© BMW

2011 BMW

Google car



© Google

2011 Google

Pikes Peak



© Audi

2010 Audi

Junior



© VW

2007 VW

// Motivation for automated driving functions

*Zero
emission*

Reduction of fuel consumption & CO₂ emission
Optimization of traffic flow



*Demographic
change*

Support unconfident drivers
Enhance mobility for elderly people

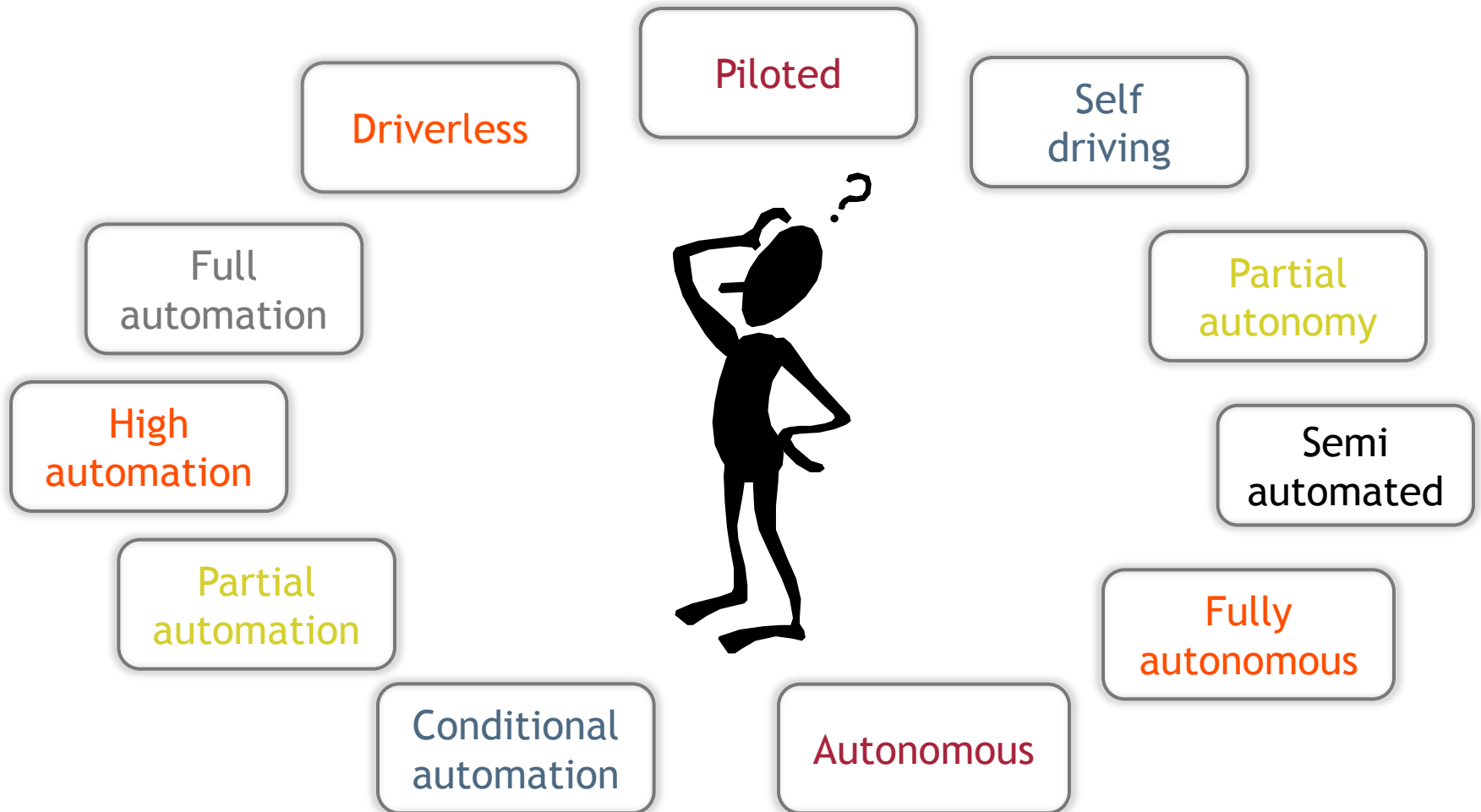


Vision zero

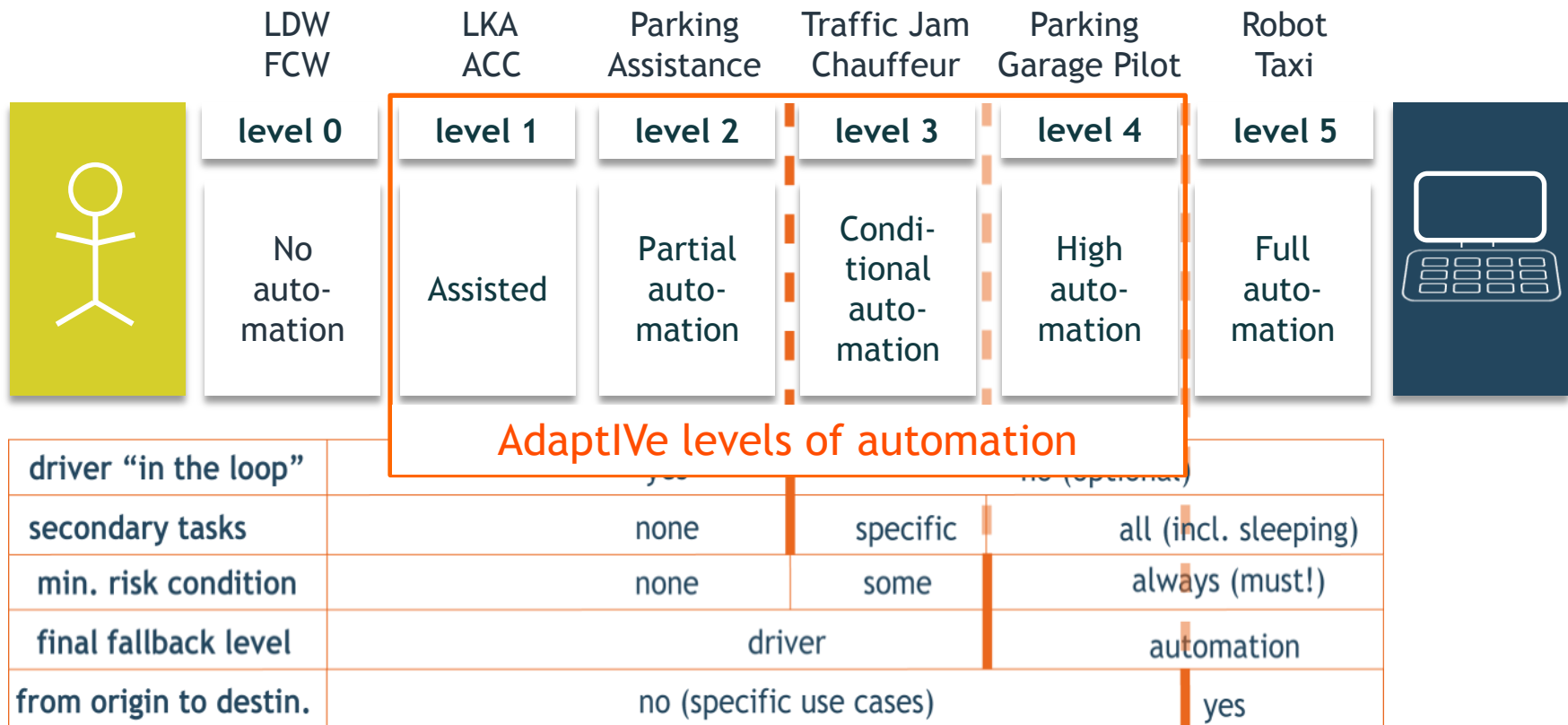
Potential for more driver support by avoiding
human driving errors



// Terms related to automated driving



// Levels of driving automation acc. to SAE and VDA



Source: SAE document J3016, "Taxonomy and Definitions for Terms Related to On-Road Automated Motor Vehicles", issued 2014-01-16, see also http://standards.sae.org/j3016_201401/

// Introduction scenario

ACC: Adaptive Cruise Control

LKA: Lane Keep Assist

LDW: Lane Departure Warning

FCW: Forward Collision Warning

- **Partial automated parking** into and out of a parking space (public parking area or in private garage)
- Via **Smartphone** or **key** parking process is started, vehicle accomplishes parking manoeuvre by itself

2	Partial automation		Parking assistant Traffic jam assist.
1	Assisted	ACC LKA	City Cruise Constr. site ass.
0	No automation	LDW FCW	
		<i>ADAS today</i>	<i>ADAS tomorrow</i>



// Introduction scenario

- Conditional automated driving in traffic jam up to 60 km/h
- On motorways and similar roads
- Driver must deliberately activate the system, but does not have to monitor the system constantly

3	Conditional automation			Traffic Jam Chauffeur
2	Partial automation		Parking ass. Traff. jam a.	
1	Assisted	ACC LKA	City Cruise Constr. ass.	
0	No automation	LDW FCW		
		<i>ADAS today</i>	<i>ADAS tomorrow</i>	<i>Automation Gen. 1</i>



// Introduction scenario

4	High				Parking garage pilot
3	Conditional automation			Traffic jam chauffeur	Highway chauffeur
2	Partial automation		Parking ass. Traff. jam a.		
1	Assisted	ACC LKA	City Cruise Constr. ass.		
0	No automation	LDW FCW			
		<i>ADAS today</i>	<i>ADAS tomorrow</i>	<i>Automation Gen. 1</i>	<i>Automation Gen. 2</i>

// Highway Chauffeur // level 3

- **Conditional automated driving up to 130 km/h** on motorways or similar roads
- From entrance to exit, on all lanes, incl. overtaking
- Driver must deliberately activate the system, but does not have to monitor the system constantly
- Driver can at all times override or switch off the system
- Take over request in time, if automation gets to its system limits
- **Safety benefit** via relief of the driver: no exhausting, manual driving during long distance driving
- **Comfort benefit** via relaxing and use of selected infotainment functionalities



// Parking Garage Pilot // level 4

- **Highly automated parking** including maneuvering to and from parking place (driverless valet parking), in parking garage
- **Driver does not have to monitor** the system constantly, may depart
- **Via Smartphone or key** parking manoeuvre and return of the vehicle is initiated
- **Safety benefit** due to avoidance of parking damages
- **Comfort benefit** due to time saving: short distances, customer does not have to access the parking garage



// Introduction scenario

5	Full automation					Robot Taxi
4	High automation				Parking garage Pilot	
3	Conditional automation			Traf. J. Cha. City Chauff.	Highway Chauffeur	
2	Partial automation		Parking ass. Traff. jam a.			
1	Assisted	ACC LKA	City Cruise Constr. ass.			
0	No automation	LDW FCW				
		<i>ADAS today</i>	<i>ADAS tomorrow</i>	<i>Automation Gen. 1</i>	<i>Automation Gen. 2</i>	<i>n.a.</i>

// Demonstrators



Parking assistance,
garage, special areas,
multi-level garage,
Stop & go

City cruise, City chauffeur,
Supervised city control

Enter & exit highway,
following lane, lane-
change, filter-in,
overtaking , danger spot
intervention, Stop & go

Safe stop



Co-funded by
the European Union

Adapt*://*Ve

*Automated Driving Applications and
Technologies for Intelligent Vehicles*

Aria Etemad
Volkswagen Group Research

+49-5361-9-13654
aria.etemad@volkswagen.de

Thank you.

