

DAIMLER



Adapt|!|Ve

Automated Driving Applications and Technologies for Intelligent Vehicles

Automated Driving Applications and Technologies for Intelligent Vehicles - Adapt|Ve

23rd Aachen Colloquium

Andreas Knapp
Felix Fahrenkrog

Aachen
October 7th, 2014



// Content

- Adaptive
- Automated Driving Functions
- Legal Aspects - Response 4
- Evaluation of automated driving functions



// Adaptive Facts

Budget: EUR 25 Million
European Commission: EUR 14,3 Million

Duration: 42 months (January 2014 - June 2017)

Coordinator: Aria Etemad, Volkswagen Group Research

8 Countries: France, Germany, Greece, Italy, Spain, Sweden, The Netherlands, United Kingdom



// Adaptive Project Overview

Widespread application of automated driving to improve road safety and address inefficiency in traffic flow whilst mitigating the environmental impact of road traffic //

Legal issues,
terminology



Strategies for human-vehicle
integration



New evaluation methods,
impact assessment



Automated driving close
distance manoeuvring



Automated driving in
urban environment



Automated driving
on highway



// AdaptIVe

Motivation for automated driving functions

*Zero
emission*

Reduction of fuel consumption & CO₂ emission
Optimization of traffic flow



*Demographic
change*

Support unconfident drivers
Enhance mobility for elderly people



Vision zero

Potential for more driver support by avoiding
human driving errors



// Adaptive Targets for Research and Development

- Demonstrate automated driving in complex traffic environments. Test applications in scenarios considering the full range of automation levels.
- Enhance the perception performance by using advanced sensors supported by cooperative and communication technologies.
- Provide guidelines for the implementation of collaborative controls involving both drivers and automation.
- Define and validate specific evaluation methodologies and assess the impact of automated driving.
- Evaluate the legal framework with regards to existing implementation barriers.



// Demonstrators



Standard actuators,
ultrasonic sensors, radar,
cameras

Actuators for vehicle
control, laser scanner
sensors, radar, cameras

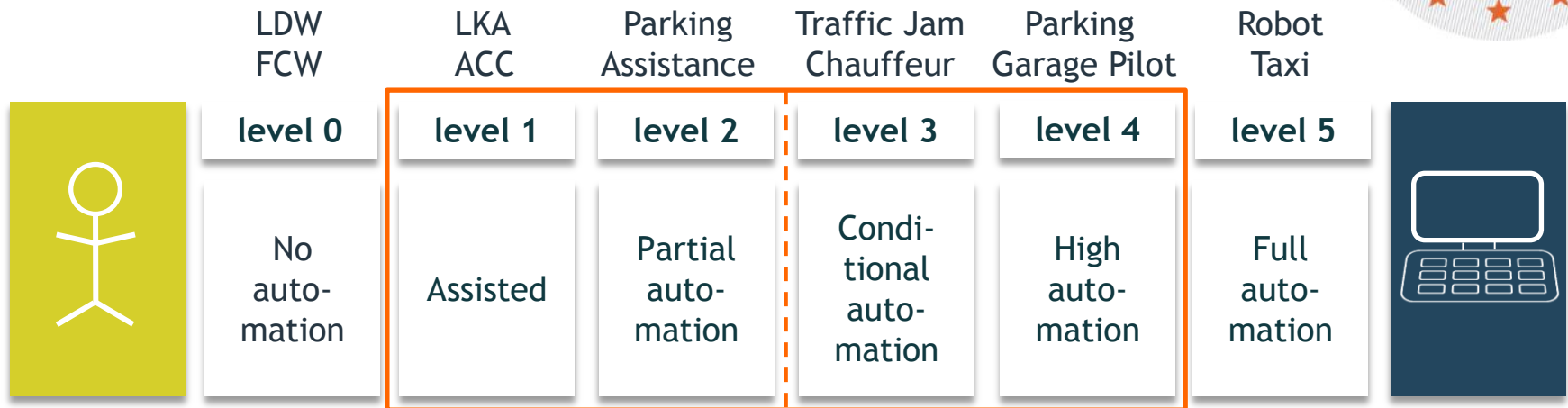
Actuators, ECUs, on-board
sensors, radar, map-based
electronic horizon, V2X

// Response 4



Legal issues - Response 4

// Levels of driving automation acc. to SAE



Driver in the loop

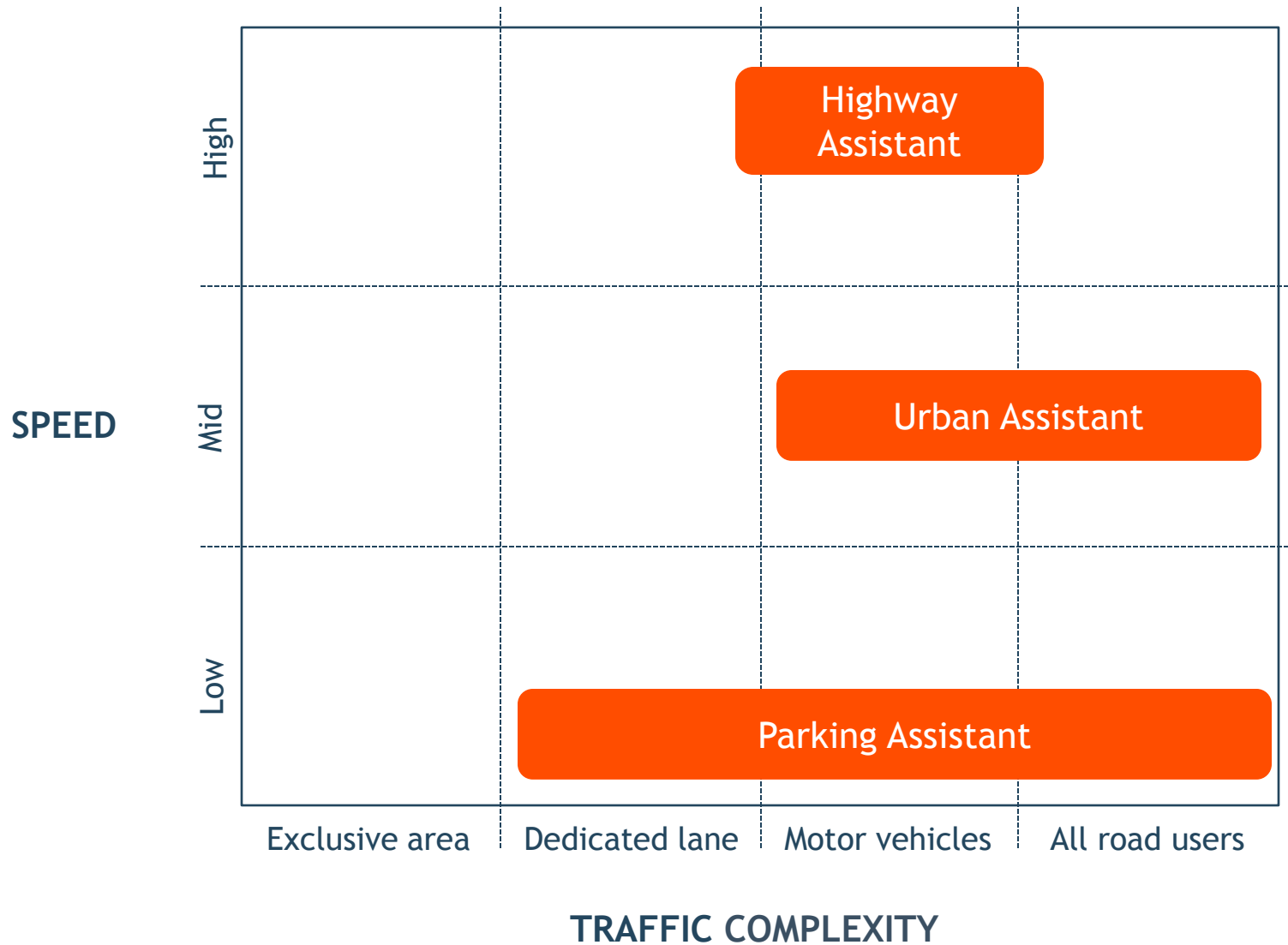
- No significant change with respect to existing driver assistance systems

Driver out of the loop

- Not in accordance with regulatory law (Vienna Convention, national road law)
- Shared responsibility for control between driver and system
→ need for action

Source: SAE document J3016, "Taxonomy and Definitions for Terms Related to On-Road Automated Motor Vehicles", issued 2014-01-16, see also http://standards.sae.org/j3016_201401/

// Application domains



// Challenges

Towards a code of practice



Unambiguous and easy to use classification of automated driving functions

Group **categories** of automated driving functions.

Customers expect safe and easy to use functions.

Assess technological limits of sensor systems.

Responsibility to supervise the driving task shifts from driver to system.

New approach to validate safety of functions needed.

Define steps towards a safe introduction of highly automated driving functions into the market. //

// Legal topics

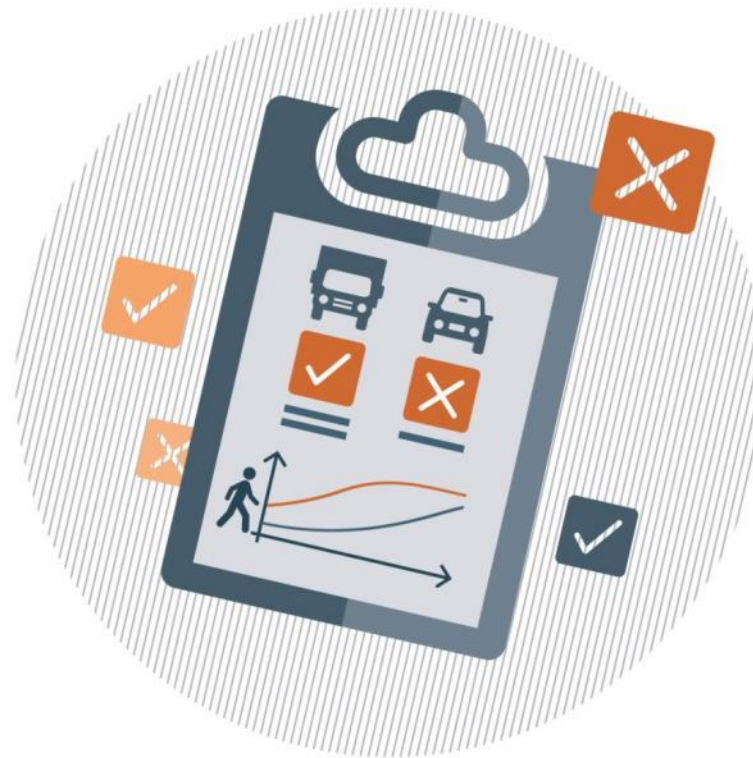


Determine need for action: allow introduction with acceptable risk

- Current legal situation does not allow automated driving on public roads.
- Conformity of automated driving functions to national law has to be assessed on a country by country basis.
- New risks for the manufacturer resulting from product liability
- Protection against corruption and fraud of vehicle data and V2X data
- Usage and protection of data collected by automated driving functions



// Evaluation

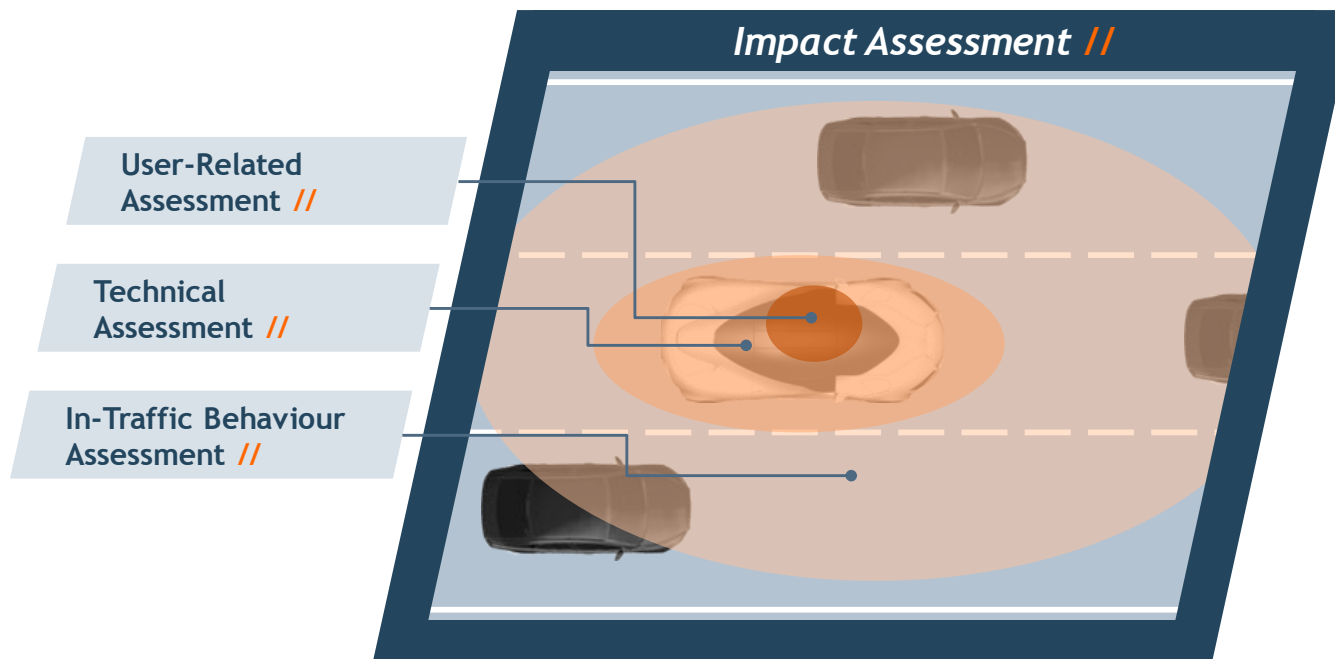


Evaluation framework

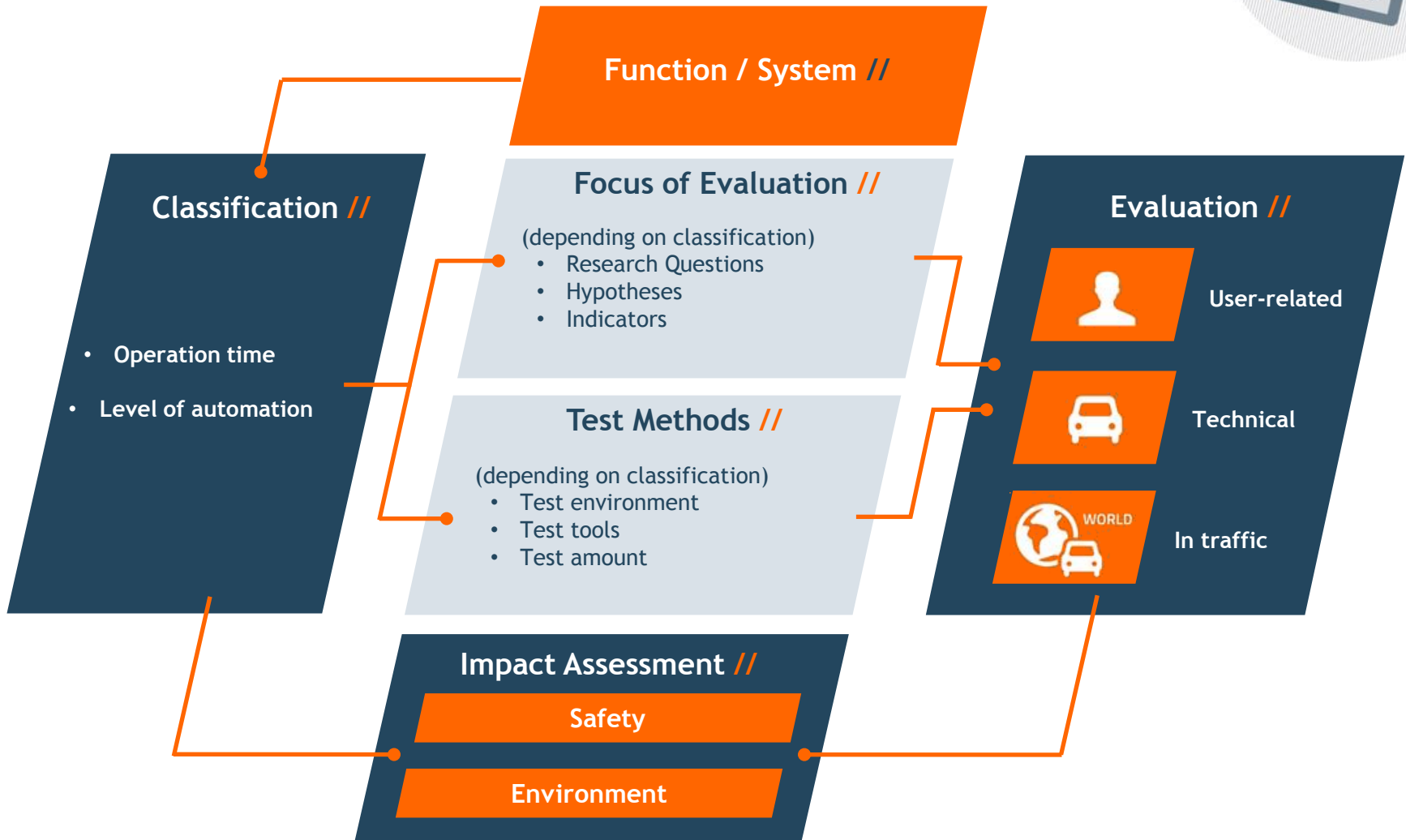
// Adaptive SP „Evaluation“



- Main objectives:
 - Development of an evaluation framework for automate driving functions
 - Methodology for impact analysis of automated driving applications
- Partners:
 - ika, BMW, CRF, BAST, TNO, CTAG, Lund



// Adaptive - Evaluation Approach



// Technical Assessment Evaluation Approach



Classification of automated driving functions:

- **Event based operating**
 - Function that is only active for a short period in time (typically vehicle stands still at the end or the automated driving ends)
 - Examples: Parking, Minimum Risk Manoeuvres
- **Continuously operating**
 - Function that is active for a longer period in time (typically vehicle is still moving at the end of an manoeuvre respectively automated driving is continued)
 - Example: Highway Pilot



// Evaluation Tools and Methods



Tool	Application	Person	Car	World
Field Operational Test	<ul style="list-style-type: none"> Impact assessment in reality Assessment of behaviour/components/systems 	R	R	R
Controlled Field	<ul style="list-style-type: none"> Assessment of components and systems Assessment of driver behaviour 	R	R	R \ V
Dynamic Driving Simulator	<ul style="list-style-type: none"> Assessment of driver behaviour Human machine interaction 	R	V	V
Simulation	<ul style="list-style-type: none"> Virtual layout and assessment Potential impact assessment 	V	V	V

R: Real, V: virtual

// Technical Assessment Evaluation Approach

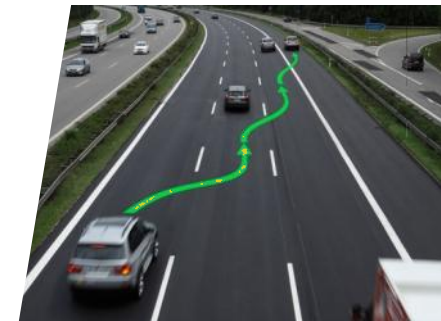


	Event Based Operating	Continuously Operating
Example		
Main focus of the evaluation	<p>Use Case</p>	
Definition of hypotheses		
Definition of test scenarios	<p>Test Case</p>	
Evaluation criteria		<ul style="list-style-type: none"> ▪ Relevant Situation detected per driven distance / driving time ▪ Decide on the severity

// Safety Impact Assessment Evaluation Approach



- Classical approach for ADAS
 - Scenario based approach
 - Accident data are analysed
 - Certain accidents are reconstructed and re-simulated accident considering function under study
 - Effect is determined by comparison of accident consequences with and without the function
- Approach for automated driving
 - Open issues
 - Today's accident data do not consider collisions of automated vehicles
 - Automated driving function operated already before a critical situation occurs
 - Consider different driving situations and not only accidents
 - Analyse how the traffic flow is affected by means of simulations
 - Identify (new) critical situations and analyse them





Co-funded by
the European Union

Adapt*://*Ve

*Automated Driving Applications and
Technologies for Intelligent Vehicles*

Andreas Knapp
Daimler AG,
Group Research and MBC Development
andreas.knapp@daimler.com

Felix Fahrenkrog
Institut für Kraftfahrzeuge,
RWTH Aachen University
fahrenkrog@ika.rwth-aachen.de

Thank you.

