

# XENOMATIX

AUTOMOTIVE VISION SOLUTIONS

ir. Filip Geuens  
CEO of XenomatiX

*Technical Workshop*

Athens, Greece  
21-22 APRIL 2016

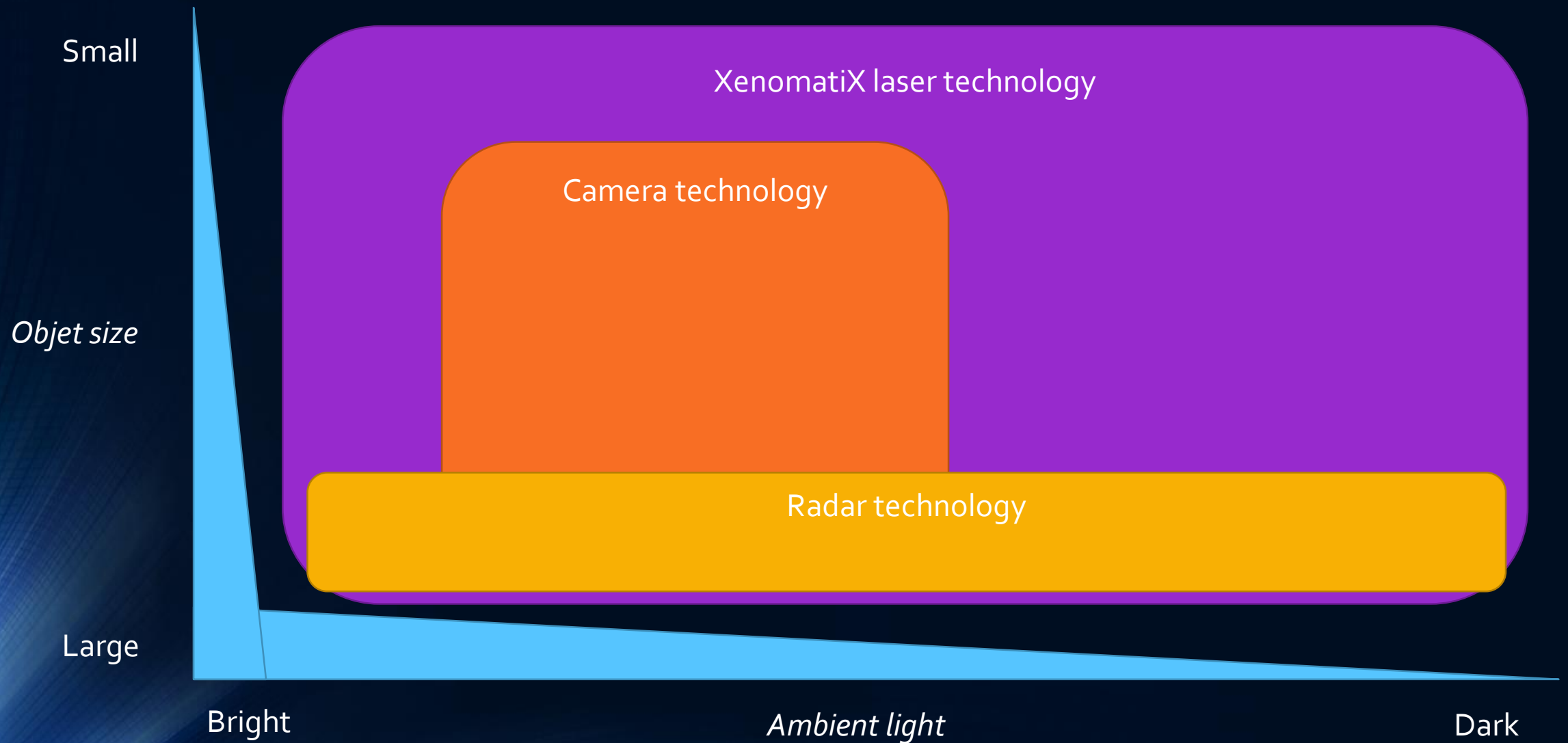
# Adapt*://*Ve

*Automated Driving Applications and  
Technologies for Intelligent Vehicles*

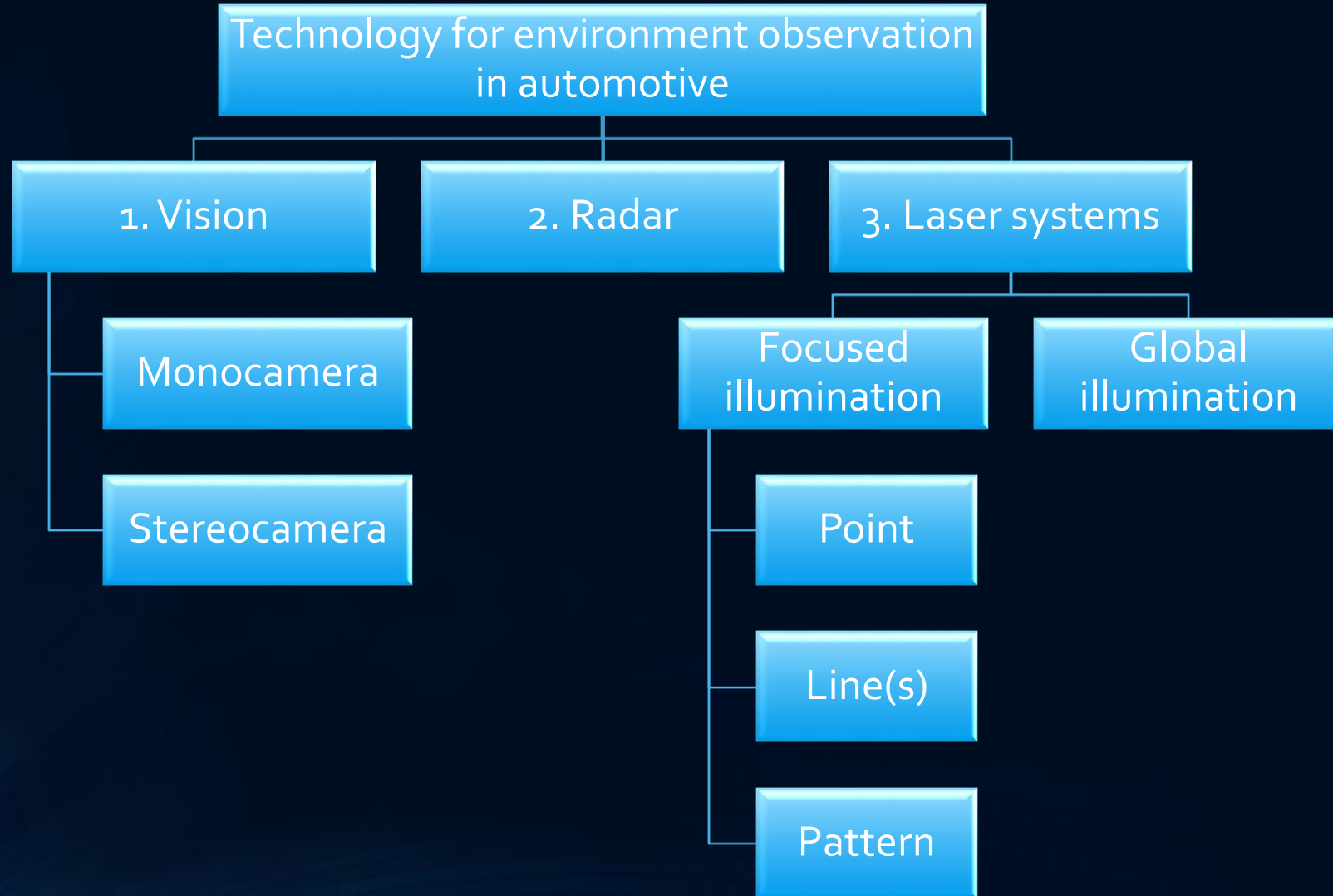
*Laser based vision  
for ADAS and Autonomous Driving*



# Detection capabilities



# TECHNOLOGY OVERVIEW



## Working principle of XenoTrack

Solid-state,  
multi-beam  
laser projector



CMOS camera



Lens & Filters



Image processing

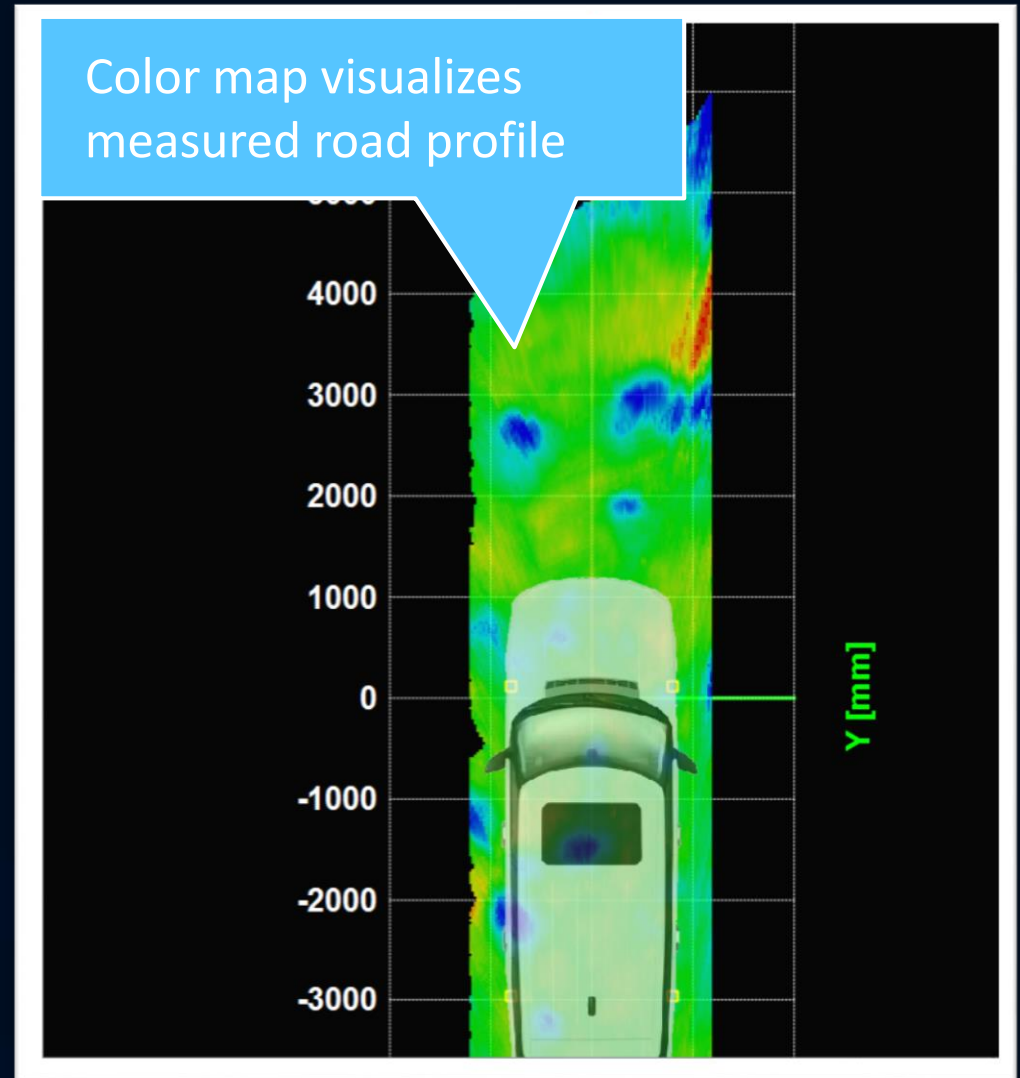


- Calculation of 3D position of projected laser spots
- Up to 180.000 points per second

Multiple  
Patents  
pending



## Automotive surround sensing under all circumstances



## Automotive focus

**XenomatiX develops & commercializes optical sensing solutions to observe road & surroundings for automotive applications**

**Application I :**

**Predictive  
Suspension**



**Application II :**

**Advanced Driver  
Assistance**



**Application III :**

**Autonomous  
Driving**

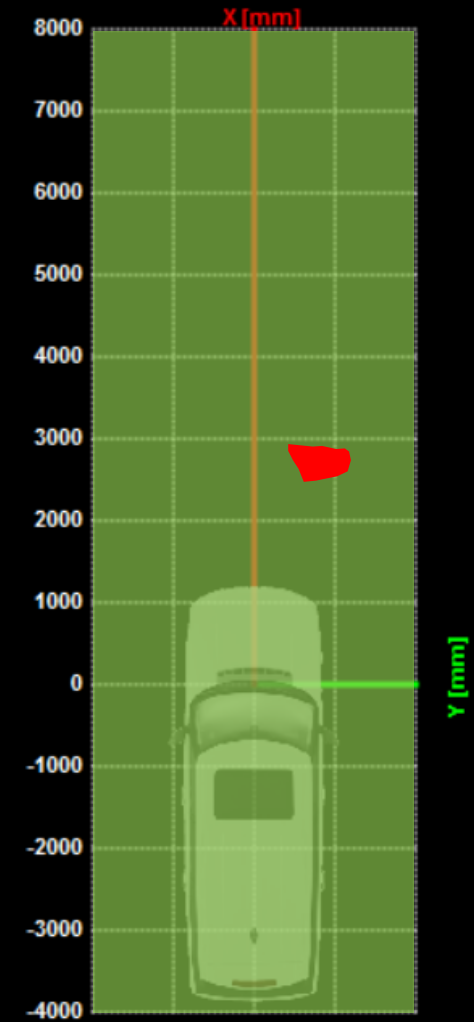




# 1. (Dangerous) object detection



## ROLLING CARPET



## 1. (Dangerous) object detection

### *What is it:*

Localization of (small) potentially dangerous objects ahead of the vehicle

### *Benefit:*

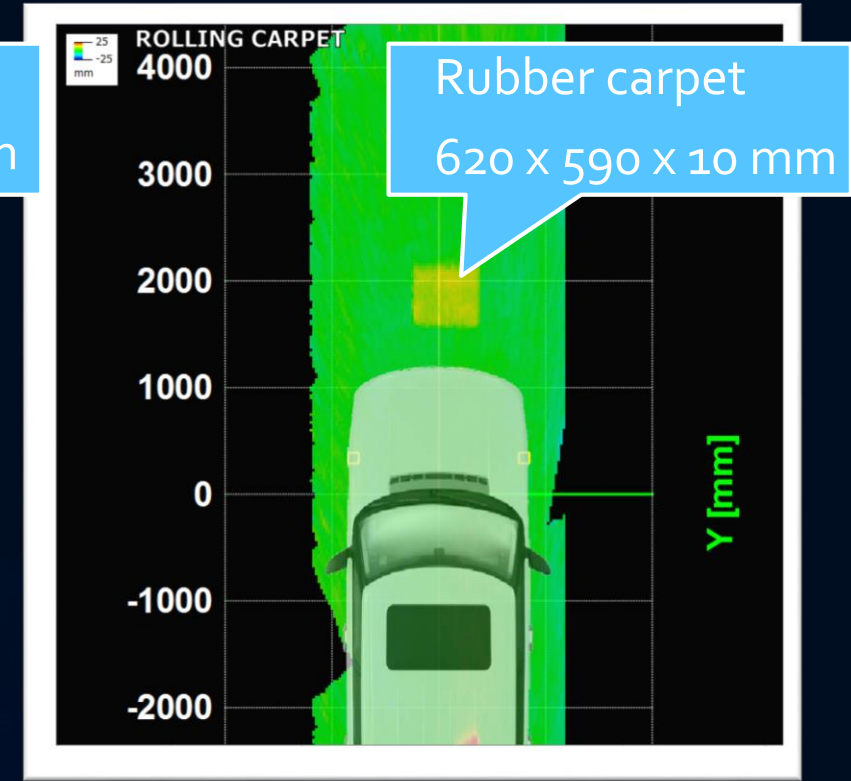
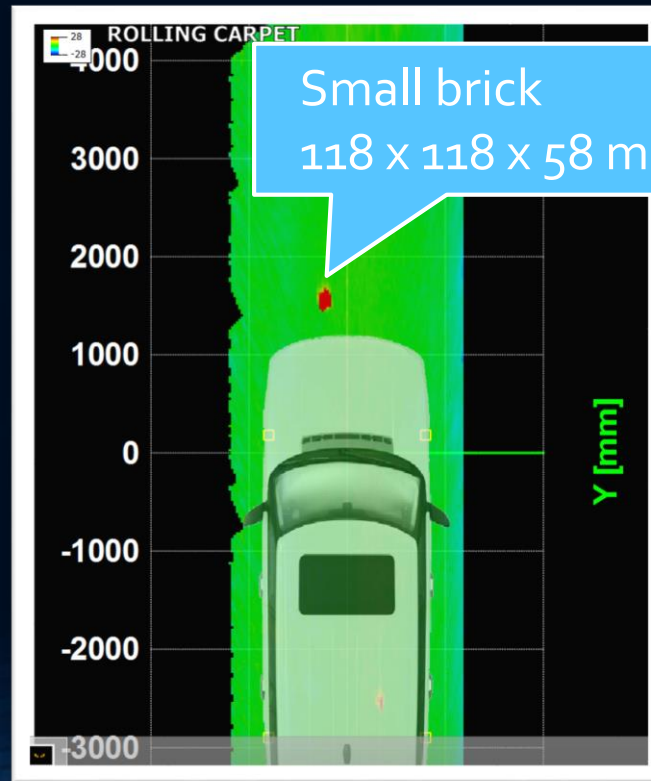
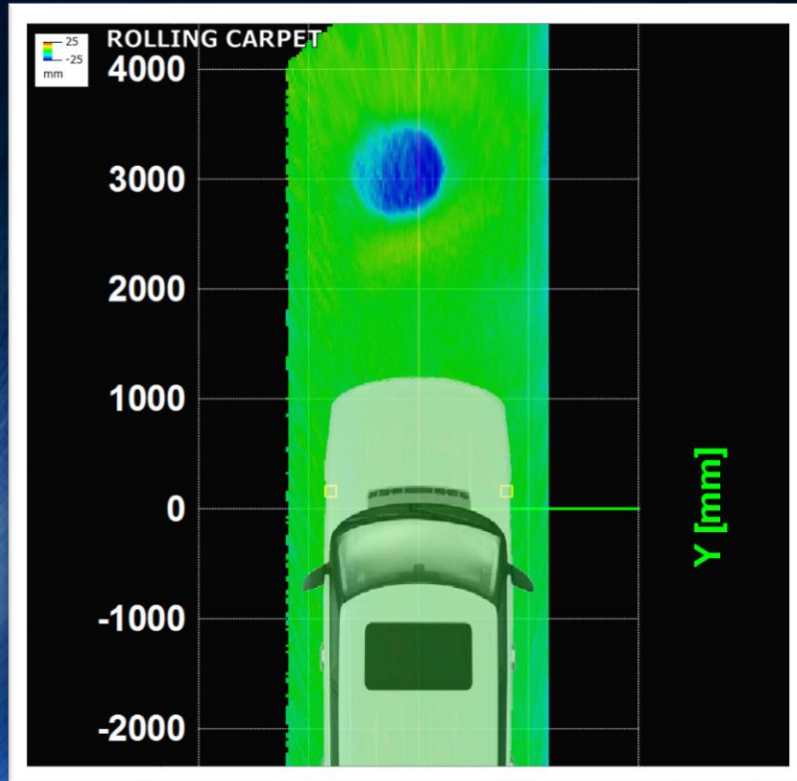
Driver alert and collision avoidance in case of objects on the road

### *Characteristics:*

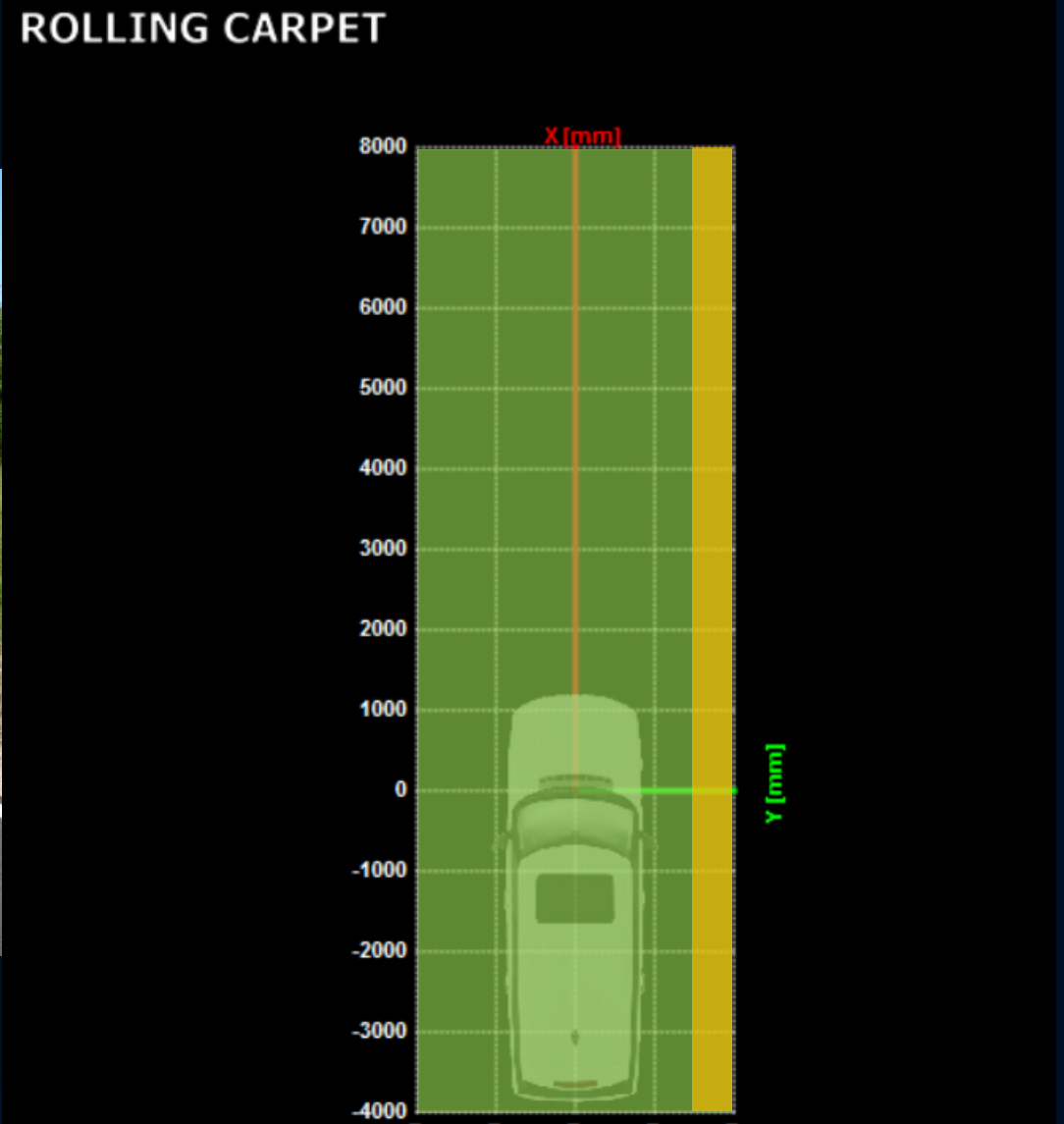
- Risk assessment based on the exact size and position of the object
- Objects are detected under any light condition (in full sunshine and during the night)
- Detection based on size and shape, not just on contrast with the road
- Works at any driving speed



# 1. (Dangerous) object detection



## 2. Driveable area recognition





## 2. Driveable area recognition

### *What is it:*

Indication on where the separation is between the normal road and non-driveable section alongside the road

### *Benefit:*

Keeps your car on the road

Prevents damage to the tires

Prevents collision with road-border objects

### *Characteristics:*

- Precise localization of border between road and shoulder
- Precise height measurement of curbstones
- Based on geometry and structure of observed area ahead of the car



## 2. Driveable area recognition

XenoTrack v2.1 RC1
— □ ×

**Controls**

**Close Session**

**Start**

60,0 Hz

virtual speed : 0,0 kmph

Reset Reference Plane

Global Epipolar Correction

**SNAPSHOT**

---

**Status**

9 messages  
0 warnings  
0 errors

---

**Counters**

Frame: **107**

# processed / dropped: **71 / 37**

Proc. time: **30 ms**

Avg. Proc. time: **33 ms**

3D Graph | 1D Graph | Road Section | Car Dynamics | System Monitor

Map display : Rolling Carpet  Flip Z Axis

**ROLLING CARPET**

**Dashboard**

**18.00 kmph**

**-1.25 deg**

Heading : [0.995962 -0.0897637 -0.0015275]

Position [m] : [6.41734 -0.33026 0]

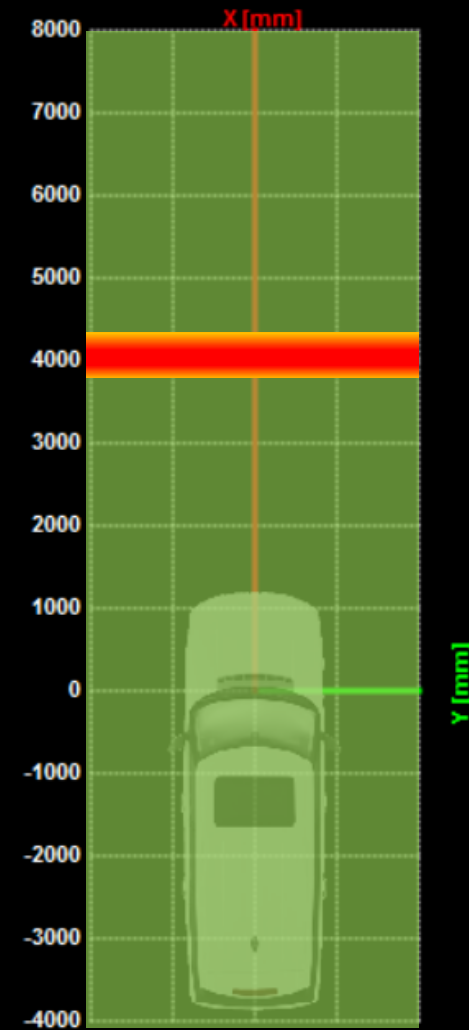
Attitude [°] : [-0.525689 0.135249 -5.14899]

**XENOTRACK** by XENOMATIX

### 3. Active Suspension



#### ROLLING CARPET





### 3. Active Suspension

#### *What is it:*

Measurement of the height profile of the road before it hits the wheels, to allow an active suspension keeping the car straight and stable.

#### *Benefit:*

Reduced body motion and more passenger comfort

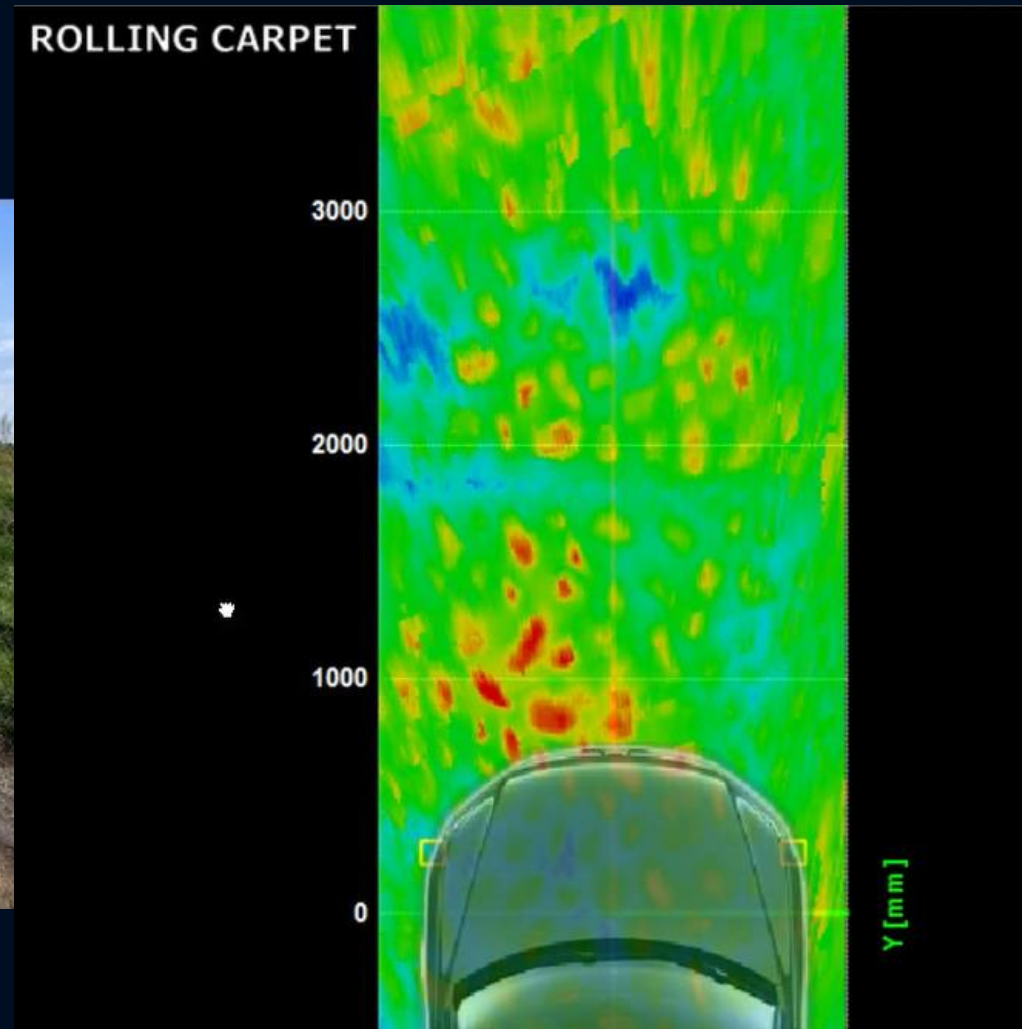
#### *Characteristics:*

- Real-time output of road profile at 540Hz for each of the 4 wheels
- Works on any road type
- High accuracy
- High resolution
- Automatic roll & pitch calculation
- Configurable feedforward delay



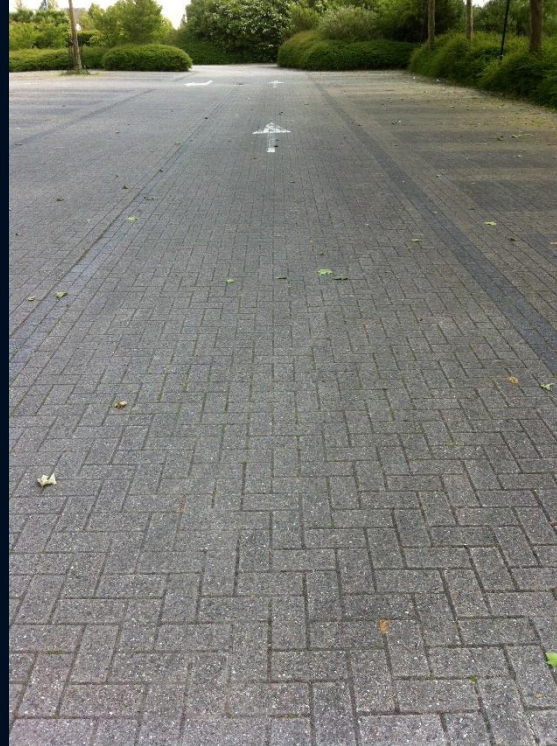


## 4. Road type identification





## ROAD TYPE IDENTIFICATION



Road type identification can be used for driver warnings, suspension control, ...

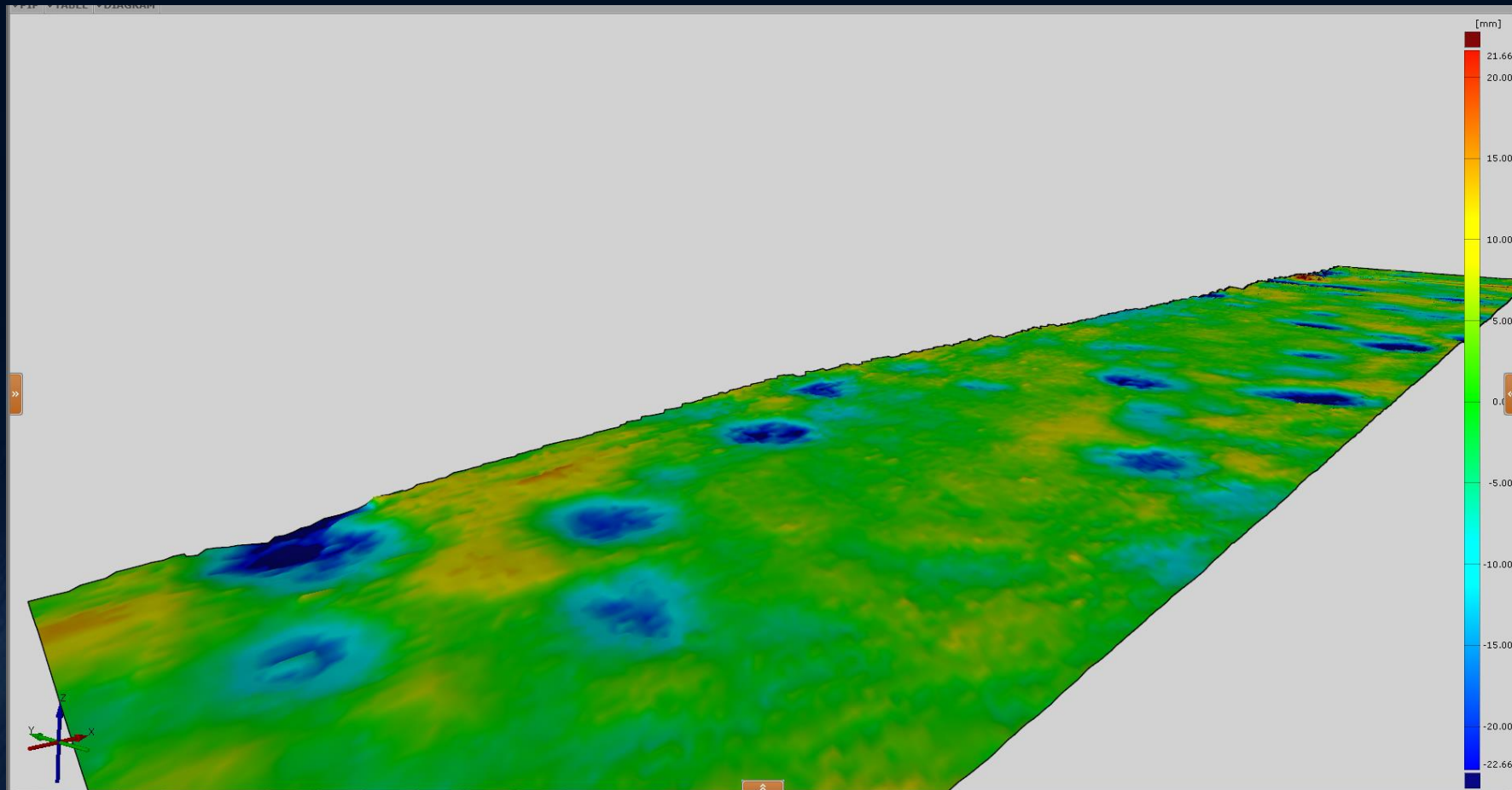


## 5. Off-road trajectory guidance





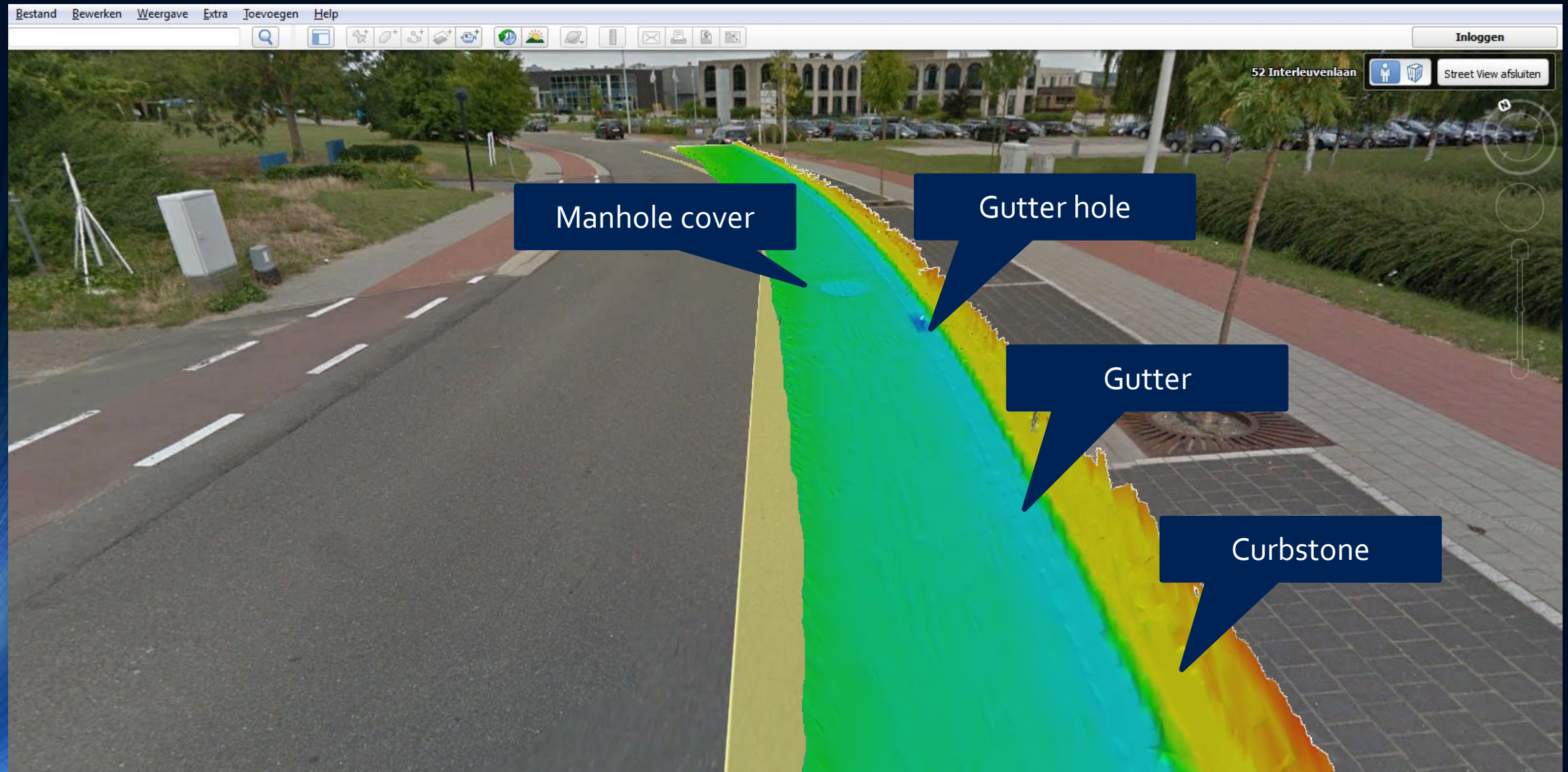
## 6. Track Digitization



*STL export of high resolution 3D map of dirt road measured with XenoTrack RT3000*

## 7. Detailed maps with road characteristics

*XenoTrack data can be used to identify road features and to add these to maps*



## UNIQUE CHARACTERISTICS

### SPEED

- Pattern recognition is much faster than interpretation of visual (stereovision) images

### SUNLIGHT

- Use of very narrow band pass filters eliminates influence of ambient light

### NIGHTVISION

- Camera only looks at IR light of laser point pattern. No need for ambient light

### DURABILITY

- System consists of solid state elements only



## UNIQUE CHARACTERISTICS

### ROBUSTNESS

- Self-alignment (between camera and projector) makes the system insensitive to (small) deformations of the car body

### WET ROADS

- Road profile can also be seen in wet conditions (Laser beam hits bottom of a puddle of water)

### RESOLUTION

- Reliable object detections and recognition thanks to high density of measurement points

### EXTENDABILITY

- New applications are still arising from different image processing of XenomatiX system

## TECHNOLOGY ROOTS



Company founders have strong background and track record in precision metrology



Based on Excellence in vision technology of Flemish Universities and spin-off companies



Technology validation by reference customers





Co-funded by  
the European Union

# Adapt*||*Ve

*Automated Driving Applications and  
Technologies for Intelligent Vehicles*

ir. Filip Geuens  
filip.geuens@xenomatix.com  
www.xenomatix.com

*Thank you.*

*Technical Workshop*

Athens, Greece  
21-22 APRIL 2016

